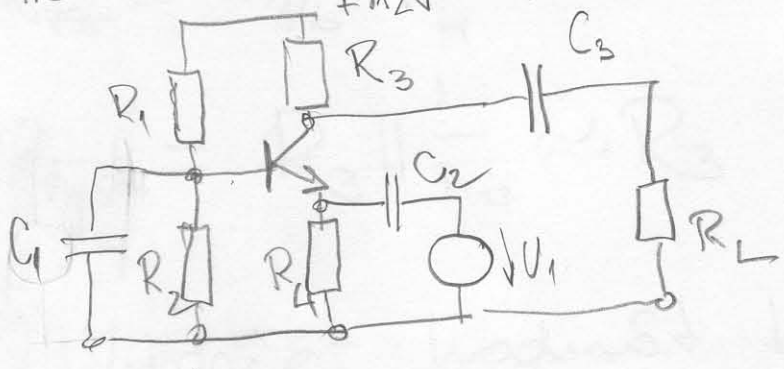


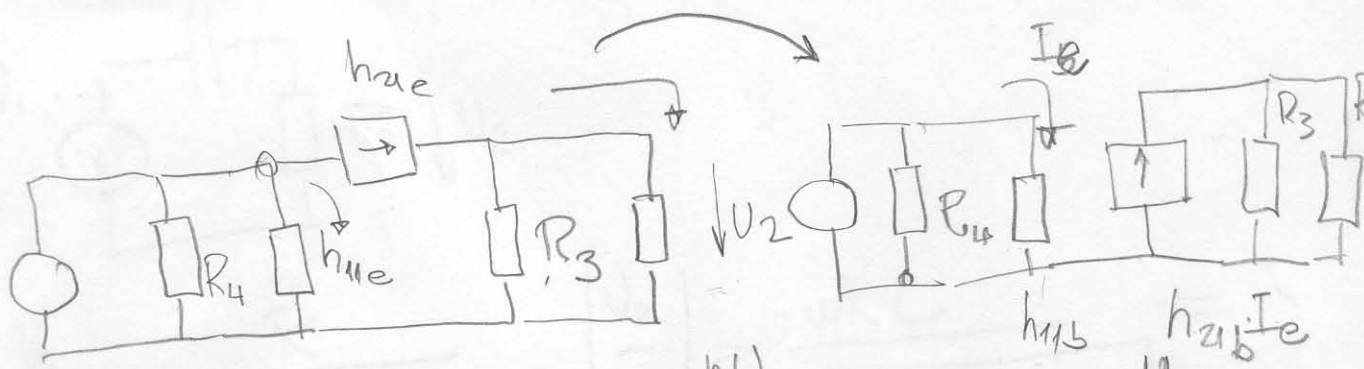
- 6 -

Prehľadte zdroj vstupného signálu pre tie isté pracov. body



Úlohy:

- 4.) Aké zapojenie
  - 5.) Nakreslite náhradnú signálovú schému
- ↔ SB
- Transformácia na h-model S



$$h_{21e} \approx \beta \quad \left. \begin{array}{l} h_{11e} = h_{21} r_e = h_{21} \frac{nU_T}{I_E} \\ h_{21b} = \alpha \end{array} \right\} \Rightarrow h_{11b} = r_e = \frac{nU_T}{I_E}$$

$$U_2 = \frac{U_1}{h_{11b}} \cdot (h_{21b} \cdot (R_3 \parallel R_L)) \Rightarrow A_U = \frac{h_{21b} (R_3 \parallel R_L)}{h_{11b}} \quad \left. \begin{array}{l} \text{Po dosade} \\ h_{21b} = \alpha \approx 1 \\ h_{11b} = r_e \end{array} \right\}$$

$$A_U \approx \frac{R_3 \parallel R_L}{r_e} \gg 1$$

$$I_b = I_1 \cdot \frac{\frac{1}{h_{11b}}}{\frac{1}{R_4} + \frac{1}{h_{11b}}} \approx \left| h_{11b} \ll R_4 \right| \approx I_1$$

$$I_2 = h_{21b} I_b \cdot \frac{1/R_L}{1/R_L + 1/R_3} \approx \left| R_L \ll R_3 \right| \approx h_{21b} I_1 \Rightarrow A_I = h_{21b} \approx 1$$